

DFC-120SP

Semi-Automated Dissolution Test System

The offline DFC systems include a fraction collector or an auto sampler which will collect the sampled dissolution media. The semi-automated DFC-120SP system is composed of a PTWS 120D or PTWS 120S staggered stirrer start dissolution bath with built-in individual vessel centering, full tubing installation in PTFE including in-situ sampling probes, a PT-SP8 syringe pump, and a PTFC-2/8 fraction collector. In this configuration the sampling probes are always immersed into the media (in-situ). This procedure is widely used.



Semi Automated Tablet Dissolution Testing

Semi-automated in this case means auto sampling for a dissolution test instrument at pre-programmed times. Automating this step alone eases the dissolution job a lot. After all tablets have been dropped, the dissolution test proceeds automatically and all samples are simultaneously removed from each connected vessel. The sample is delivered into a connected fraction collector by a peristaltic-, or the PT-SP syringe pump.

These systems do not require any external PC software to control them (the WinDiss ARGUS dissolution software package can be used optionally). Sampling information is entered directly at the connected PTWS 120D/S dissolution testing instrument. All Pharma Test tablet dissolution test instruments can be upgraded with a pump and PTFC-2/8 fraction collector or DSR-M sampling robot.

Automated Sampling

The perception of automation in dissolution testing differs greatly from user to user. The most labor intensive stage is taking samples at the specified time periods as found in the company SOP (Standard Operating Procedure). This involves the removal of 6 samples according to the USP/EP and most other Pharmacopoeia, there is often a requirement for a fast or parallel start in most cases so that accurately timed sampling may be achieved. At this point the operator must also consider either replacing the collected samples volumes in the dissolution vessels or keeping an accurate record of the volumes taken from each vessel so as to be able to calculate the true concentrations of subsequent samples.

The pumps available are either peristaltic, piston pumps, or syringe pumps. The PT-SP syringe pump as well as the CAT valve-less piston pump will give first class accuracy in terms of volume removed and refilling from and back to the system when samples are taken. Although the quality of the peristaltic pumps available today has vastly improved, it must be stressed that the peristaltic pump is still working with flexible tubing and should be qualified at the start of each determination to make sure that the flow rates are identical for each channel and that the tubing itself is in overall good condition. A good tip for long tubing life is to always release the pressure rollers from the tubing either overnight or whenever the system is left for extended periods of time and not in use.



PT-SP Multi Syringe Pumps

The PT-SP multi-syringe pump is designed specifically for parallel sample withdrawal and dosage of media from a dissolution bath into open vials inside a fraction collector. It is equipped with up to 8 replaceable 10ml high precision glass syringes. Each syringe is connected to a 3-way pinch valve for media flow control. The drive of the syringes is carried out simultaneously by a stepper motor. All syringes are rigidly connected to the common sturdy drive bar.

Peristaltic Pumps

The Ismatec® IPC 8, IPC 16 and IPC 24 series of pumps offers a reasonable cost solution for prolonged use. With the PTFE-2/8 fraction collector and their reverse liquid flow feature, the DFC systems provide the necessary control for sample transfer using this type of pump for standard off line systems. The IPC is a flat-bed design with all pump tubing laid out in front of the pump drive. The easy release individual cassette system offers some advantages for easy service.



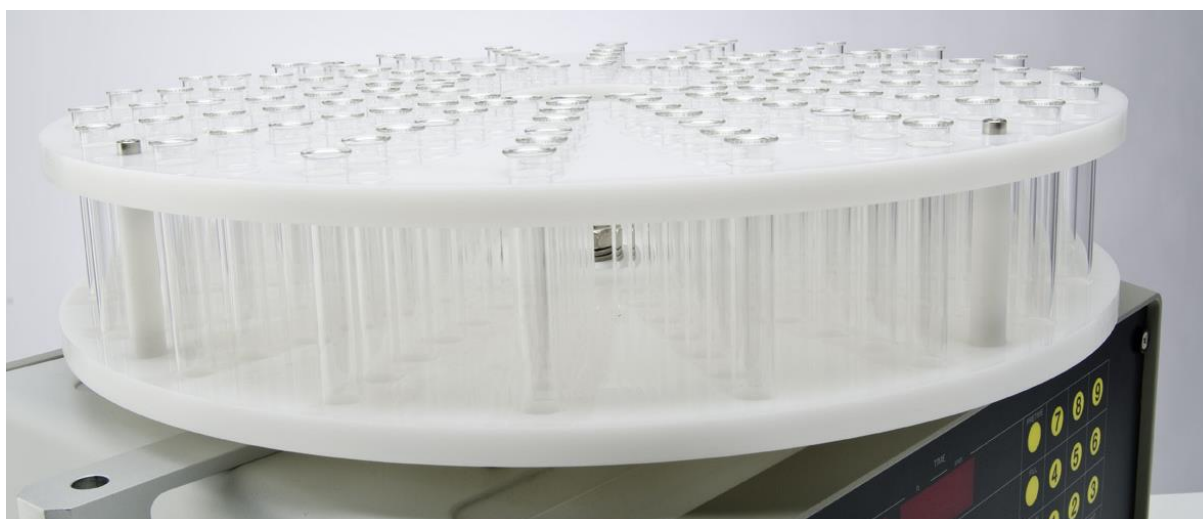


CAT Valve Less Piston Pumps

The CAT multiple piston pump units offer a more accurate solution to sample removal and transfer. Exact volumes may be transferred from the sample vessels to a fraction collector such as the PTFC-2/8. In this way, as vessel refilling is not used, exact volumes of sample removal can be recorded for subsequent concentration calculations. This system offers a more secure sampling method for non-closed loop or offline systems where the volume removed is calculated from an apparent flow rate over a fixed time period (as with peristaltic pumps). This system is not dependent on pump tubing quality and is also a good alternative when active materials are known to absorb on tubing materials such as Tygon or Silicone. The CAT pump is available with 6, 8, 12 and 24 individual pump heads, also for auto media refilling.

Operation Principle

As soon as the samples have been inserted, the system will start its automated operation. The sampling times have been programmed via the touch screen of the PTWS 120D or PTWS 120S dissolution bath and are saved as a specific method for subsequent tests. After the start of test a command is sent from the dissolution bath to the PTFC-2/8 fraction collector and from there to the connected pump to start a sampling sequence. The pump will be started to fill up and pre-flush the tubing. When all tubing is filled-up, the samples are collected into vials inside the collector dish of the PTFC-2/8. Depending on the system configuration, after dosing the volume will be. At the end of a cycle all tubing is emptied. The system is waiting for the next sampling time. All vials are covered during the test; the vial dish can be easily removed. Also special dishes are available for HPLC vials.



Advantages

Some of the highlights the DFC-120SP system offers are:

- » The system automates the taking of samples, the most labor intensive stage of a dissolution test
- » Automated sampling eliminates human errors, as equal sampling times and standardized solvent transport offer high reproducibility
- » Excellent reproducibility of sampling volumes and times
- » Offers unattended operation after start of dissolution run
- » Pharma Test offers full system responsibility

Features

The main features of the DFC-120SP system are:

- » Automated temperature check and log at all sampling times
- » Fully USP <711/724> and EP <2.9.3/4> compliant
- » PTWS 120D - 6 stirred positions same speed
- » PTWS 120S - individual speed control for each stirrer or grouping like 2x3, 3x2 etc.
- » System composed of PTWS 120D or PTWS 120S dissolution bath, PTFC-2/8 fraction collector and PT-SP8 syringe pump. Alternatively Ismatec peristaltic pumps or CAT piston pumps may be used
- » Automated withdrawal of samples at specified times via in-situ sampling probes
- » Printed test report (PT-RP80 required)
- » Automated media refilling

Standard Scope of Supply

The DFC-120SP system comes ready to use with the following standard scope of supply:

- » PTFE tubing installation for offline sampling
- » In-situ 316 stainless steel sampling tubes
- » PTFC 2/8 fraction collector (sampling only)
- » PT-SP8 syringe pump
- » One set of stainless steel paddles
- » One set of 1000ml Borosilicate glass vessels
- » One set of depth adjustment balls
- » One bottle of ALGEX water preservative
- » Comprehensive documentation folder including:
 - » User manual
 - » DQ/QC instrument compliance test certificate
 - » IQ documentation
 - » OQ documentation
 - » Instrument logbook
 - » Compliance Certificates for vessels and stirring tools

Options

In addition to the standard scope of supply Pharma Test offers a broad range of accessories and options including:

- » Amber colored vessels for UV sensitive test materials
- » PT-RP80 serial report printer
- » E-VEN pinch valve system used at the PTFE-2/8 fraction collector for automated media refilling and 16 or 24 channel peristaltic pump
- » PT-SP media refilling syringe pump
- » Customized collector dishes for HPLC or other vials
- » Full range of MonoShaft™ stirring tools available
- » Different pore size filter tips
- » Full range of certified validation tools available

Technical Specifications PTWS 120D

Parameter	Specification
Display	6", 320x240 pixel color LCD, illuminated
Data Entry	Resistive touch screen, functional touch keys
Acoustic Signal	Programmable acoustic signal for operator information
Timer	Programmable sampling times, wake-up and sleeping mode, operation time information and timer count-down mode
Stirrer Position	8 programmable stirrer immersion positions (paddle over disk, transdermal cylinder etc.)
Testing Method Programming	Unlimited number of different test descriptions can be stored on SD card
User Access Control	Multiple level access control, CFR compliant
OQ, PQ control	Programmable time periods to remind on QO or PQ testing
Printer	External PT-RP80 report printer using long-life printer paper
Number of Stirred Vessels	6 (3 by 2 or 2 by 3 arrangement)
Standard Vessels	1 liter USP/EP Borosilicate glass vessel, each individually coded
Vessel Covers	Ultra-low evaporation design (< 0.7% within 24h)
Individual Speed Control	25 - 250 RPM for each stirrer
Speed Accuracy	±2% of set speed, typically < 1%
Stirrer Shaft Wobble	Better than 0.2 mm total run out
System Tools	MonoShaft™ stirrer design, USP/EP apparatus 1, 2, 5, 6 tool adapter, cream cell, transdermal patch tools, each tool and vessel individually coded
Heating System	Pump for water circulation and 1500W heater for fast heating up (230/240V units only)
Heater Range	25 - 45°C
Heater Accuracy	± 0.2°C inside the water bath
Heat Up Process	Energy saving, programmable "wake up" heater function and "sleep mode"
Water Circulation	Water circulated from external heating system through special diffuser inside the water bath
Vibration Elimination	External heating system, spring loaded pump assembly
Calibration	Built-in calibration procedures for speed, temperature control, OQ/PQ interval programmable including alarm indicator
Bench Space Requirement	450 x 650 mm (2 by 4) or 650 x 450 mm (4 by 2)

Technical Specifications PTWS 120S

Parameter	Specification
Number of Stirred Vessels	6 (3 by 2 or 2 by 3 arrangement)
Individual Speed Control – or grouping	25 - 250 RPM for each stirrer
Speed Accuracy for each stirrer	±2% of set speed, typically < 1%
All other parameters identical to PTWS 120D	

Technical Specifications PT-SP6 / 8 Multi Syringe Pump

Parameter	Specification
Sampling Volume	1.0ml to 25.0ml
Syringe Specification	Vol. 10ml - Borosilicate Glass, PCTFE, PTFE, operating temp. 10 - 40°C
Plunger tip configuration	Zero dead volume design
Syringe Accuracy	± 1.0% - Precision ± 1.0%
Dosing Accuracy	< 2% transfer error
Sampling & Dispensing Speed	Minimum 0.50ml/min. Maximum 20.0ml/min.
No. of steps for 10ml.	36655
Media Refilling	Optional, using additional PT-SP piston pump(s)
Display	Backlit LCD
Data Entry	Function keys
Materials Used	All wet parts: 99.7% Al2O3, Borosilicate Glass, Teflon or PEEK
Tubing	1.0mm ID to 1.6mm OD FEP or PTFE (not included in supply scope)
Interface	RS-232 port, 2 x I/O port
Power	110/230 Volt, 50/60 Hz
Packaging Dimensions	Approx. 400 x 300 x 500 mm (Length x Width x Height)
Net / Gross Weight	Approx. 4.5 / 10 kg

Technical Specifications IPC Peristaltic Pump

Parameter	Specification
Number of Pump Channels	8, 16 or 24 channels, pressure adjustable
Rotation Speed	Continuously adjustable, volume depends on size of tubing (diameter) used
Sampling Accuracy	±5%
Speed	Adjustable 2.5 – 50 rpm
Tubing	Ismaprene, Silicone or other
Interface	Analogue signal I/O port, RS232
Net/Gross Weight	Approx. 3.5 / 8.0 kg
Packaging Dimensions	Approx. 400 x 300 x 300 mm (Length x Width x Height)

Technical Specifications CAT Piston Pump

Parameter	Specification
Number of Pump Heads	6, 8, 12 or 24 individual pump heads
Minimum Flow Rate	0.15 ml/min.
Maximum Flow Rate	20.0 ml/min.
Accuracy	< 1% over the full range
Tubing	1.0mm ID – 1.6mm OD FEP or PTFE (not included in supply scope of individual pump)
Interface	Analogue signal I/O port, RS232
Packaging Dimensions	Approx. 600 x 500 x 500 mm (Length x Width x Height)
Net/Gross Weight	Approx. 12 kg / 19 kg

We reserve the right to make technical changes without any prior notice.